

Moving Charges and Magnetism

Multiple Choice Questions (MCQs)

Q. 1 Two charged particles traverse identical helical paths in a completely opposite sense in a uniform magnetic field $\mathbf{B} = B_0 \hat{\mathbf{k}}$.

- (a) They have equal z-components of momenta
- (b) They must have equal charges
- (c) They necessarily represent a particle, anti-particle pair
- (d) The charge to mass ratio satisfy

$$\left(\frac{e}{m}\right)_1 + \left(\frac{e}{m}\right)_2 = 0$$

κ Thinking Process

The uniqueness of helical path is determined by its pitch which is given by

$$\text{Pitch} = \frac{2\pi m v \cos\theta}{qB}$$

Ans. (d) For given pitch d correspond to charge particle, we have

$$\frac{q}{m} = \frac{2\pi v \cos\theta}{qB} = \text{constant}$$

Since, charged particles traverse identical helical paths in a completely opposite sense in a uniform magnetic field \mathbf{B} , LHS for two particles should be same and of opposite sign. Therefore,

$$\left(\frac{e}{m}\right)_1 + \left(\frac{e}{m}\right)_2 = 0$$

Note Consider e in place of q in solution.

Q. 2 Biot-Savart law indicates that the moving electrons (velocity v) produce a magnetic field \mathbf{B} such that

- (a) \mathbf{B} is perpendicular of
- (b) \mathbf{B} is parallel to v
- (c) it obeys inverse cube law
- (d) it is along the line joining the electron and point of observation



Thinking Process

Here use of Biot-Savart law play vital role.

Ans. (a) In Biot-Savart's law, magnetic field $\mathbf{B} \parallel \mathbf{idl} \times \mathbf{r}$ and \mathbf{idl} due to flow of electron is in opposite direction of \mathbf{v} and by direction of cross product of two vectors

$$\mathbf{B} \perp \mathbf{v}$$

Q. 3 A current carrying circular loop of radius R is placed in the x - y plane with centre at the origin. Half of the loop with $x > 0$ is now bent so that it now lies in the y - z plane.

- (a) The magnitude of magnetic moment now diminishes
- (b) The magnetic moment does not change
- (c) The magnitude of \mathbf{B} at $(0, 0, z)$, $z > R$ increases
- (d) The magnitude of \mathbf{B} at $(0, 0, z)$, $z \gg R$ is unchanged

Thinking Process

The magnetic moment of circular loop and the net magnitudes of magnetic moment of each semicircular loop of radius R lie in the x - y plane and the y - z plane are compared.

Ans. (a) The direction of magnetic moment of circular loop of radius R is placed in the x - y plane is along z -direction and given by $M = I(\pi R^2)$, when half of the loop with $x > 0$ is now bent so that it now lies in the y - z plane, the magnitudes of magnetic moment of each semicircular loop of radius R lie in the x - y plane and the y - z plane is $M' = I(\pi R^2)/4$ and the direction of magnetic moments are along z -direction and x -direction respectively.

Their resultant

$$M_{\text{net}} = \sqrt{M'^2 + M'^2} = \sqrt{2} M' = \sqrt{2} I(\pi R^2)/4$$

So, $M_{\text{net}} < M$ or M diminishes.

Q. 4 An electron is projected with uniform velocity along the axis of a current carrying long solenoid. Which of the following is true?

- (a) The electron will be accelerated along the axis
- (b) The electron path will be circular about the axis
- (c) The electron will experience a force at 45° to the axis and hence execute a helical path
- (d) The electron will continue to move with uniform velocity along the axis of the solenoid

Thinking Process

Here, magnetic Lorentz force comes into existence when a charge moves in uniform magnetic field produces by current carrying long solenoid.

Ans. (d) Magnetic Lorentz force electron is projected with uniform velocity along the axis of a current carrying long solenoid $F = -evB \sin 180^\circ = 0$ ($\theta = 0^\circ$) as magnetic field and velocity are parallel. The electron will continue to move with uniform velocity along the axis of the solenoid.

Q. 5 In a cyclotron, a charged particle

- (a) undergoes acceleration all the time
- (b) speeds up between the dees because of the magnetic field
- (c) speeds up in a dee
- (d) slows down within a dee and speeds up between dees



κ Thinking Process

Here, understanding of working of cyclotron is needed.

Ans. (a) The charged particle undergoes acceleration as

- (i) speeds up between the dees because of the oscillating electric field and
- (ii) speed remain the same inside the dees because of the magnetic field but direction undergoes change continuously.

Q.6 A circular current loop of magnetic moment M is in an arbitrary orientation in an external magnetic field B . The work done to rotate the loop by 30° about an axis perpendicular to its plane is

(a) MB

(b) $\sqrt{3} \frac{MB}{2}$

(c) $\frac{MB}{2}$

(d) zero

κ Thinking Process

The rotation of the loop by 30° about an axis perpendicular to its plane imply that the axis of the loop still continues to inclined with the same angle with the direction of magnetic field.

Ans. (a) The rotation of the loop by 30° about an axis perpendicular to its plane make no change in the angle made by axis of the loop with the direction of magnetic field, therefore, the work done to rotate the loop is zero.

Note The work done to rotate the loop in magnetic field $W = MB(\cos\theta_1 - \cos\theta_2)$, where signs are as usual.

Q.7 The gyro-magnetic ratio of an electron in an H-atom, according to Bohr model, is

- (a) independent of which orbit it is in
- (b) negative
- (c) positive
- (d) increases with the quantum number n .

κ Thinking Process

The gyro-magnetic ratio of an electron in an H-atom is equal to the ratio of the magnetic moment and the angular momentum of the electron.

Ans. (a) If I is the magnitude of the angular momentum of the electron about the central nucleus (orbital angular momentum). Vectorially,

$$\mu_l = -\frac{e}{2m_e} I.$$

The negative sign indicates that the angular momentum of the electron is opposite in direction to the magnetic moment.



Multiple Choice Questions (More Than One Options)

Q. 8 Consider a wire carrying a steady current, I placed in a uniform magnetic field \mathbf{B} perpendicular to its length. Consider the charges inside the wire. It is known that magnetic forces do no work. This implies that,

- (a) motion of charges inside the conductor is unaffected by \mathbf{B} , since they do not absorb energy
- (b) some charges inside the wire move to the surface as a result of \mathbf{B}
- (c) If the wire moves under the influence of \mathbf{B} , no work is done by the force
- (d) if the wire moves under the influence of \mathbf{B} , no work is done by the magnetic force on the ions, assumed fixed within the wire.

Ans. (b, d)

Magnetic forces on a wire carrying a steady current, I placed in a uniform magnetic field B , a wire carrying a steady current, I placed in a uniform magnetic field \mathbf{B} perpendicular to its length is given by

$$F = I l B$$

The direction of force is given by Fleming's left hand rule and F is perpendicular to the direction of magnetic field \mathbf{B} . Therefore, work done by the magnetic force on the ions is zero.

Q. 9 Two identical current carrying coaxial loops, carry current I in an opposite sense. A simple amperian loop passes through both of them once. Calling the loop as C ,

- (a) $\oint_C \mathbf{B} \cdot d\mathbf{l} = \mu_0 I$
- (b) the value of $\oint_C \mathbf{B} \cdot d\mathbf{l} = \mp 2\mu_0 I$ is independent of sense of C
- (c) there may be a point on C where, \mathbf{B} and $d\mathbf{l}$ are perpendicular
- (d) B vanishes everywhere on C

κ Thinking Process

The Ampere's circuital law is to be applied on given situation.

Ans. (b, c)

Applying the Ampere's circuital law, we have

$$\oint_C \mathbf{B} \cdot d\mathbf{l} = \mu_0 (I - I) = 0 \quad (\text{because current is in opposite sense.})$$

Also, there may be a point on C where \mathbf{B} and $d\mathbf{l}$ are perpendicular and hence,

$$\oint_C \mathbf{B} \cdot d\mathbf{l} = 0$$

Q. 10A cubical region of space is filled with some uniform electric and magnetic fields. An electron enters the cube across one of its faces with velocity v and a positron enters via opposite face with velocity $-v$. At this instant,

- (a) the electric forces on both the particles cause identical accelerations
- (b) the magnetic forces on both the particles cause equal accelerations
- (c) both particles gain or loose energy at the same rate
- (d) the motion of the Centre of Mass (CM) is determined by \mathbf{B} alone

K Thinking Process

The Lorentz force is experienced by the single moving charge in space is filled with some uniform electric and magnetic fields is given by $\mathbf{F} = q\mathbf{E} + q(\mathbf{v} \times \mathbf{B})$.

Ans. (b, c, d)

The magnetic forces $\mathbf{F} = q(\mathbf{v} \times \mathbf{B})$, on charge particle is either zero or \mathbf{F} is perpendicular to \mathbf{v} (or component of \mathbf{v}) which in turn revolves particles on circular path with uniform speed. In both the cases particles have equal accelerations.

Both the particles gain or loss energy at the same rate as both are subjected to the same electric force ($\mathbf{F} = q\mathbf{E}$) in opposite direction.

Since, there is no change of the Centre of Mass (CM) of the particles, therefore the motion of the Centre of Mass (CM) is determined by \mathbf{B} alone.

Q. 11 A charged particle would continue to move with a constant velocity in a region wherein,

(a) $\mathbf{E} = 0, \mathbf{B} \neq 0$

(b) $\mathbf{E} \neq 0, \mathbf{B} \neq 0$

(c) $\mathbf{E} \neq 0, \mathbf{B} = 0$

(d) $\mathbf{E} = 0, \mathbf{B} = 0$

K Thinking Process

The Lorentz force is experienced by the single moving charge in space is filled with some uniform electric and magnetic fields is given by $\mathbf{F} = q\mathbf{E} + q(\mathbf{v} \times \mathbf{B})$.

Ans. (a, b, d)

Here, force on charged particle due to electric field $\mathbf{F}_E = q\mathbf{E}$.

Force on charged particle due to magnetic field, $\mathbf{F}_m = q(\mathbf{v} \times \mathbf{B})$

Now, $F_E = 0$ if $E = 0$ and $F_m = 0$ if $\sin \theta = 0$ or $\theta^\circ = 0^\circ$ or 180°

Hence, $B \neq 0$.

Also, $E = 0$ and $B = 0$ and the resultant force $q\mathbf{E} + q(\mathbf{v} \times \mathbf{B}) = 0$. In this case $E \neq 0$ and $B \neq 0$

Very Short Answer Type Questions

Q. 12 Verify that the cyclotron frequency $\omega = eB/m$ has the correct dimensions of $[T]^{-1}$.

Ans. For a charge particle moving perpendicular to the magnetic field, the magnetic Lorentz forces provides necessary centripetal force for revolution.

$$\frac{mv^2}{R} = qvB$$

On simplifying the terms, we have

$$\therefore \frac{qB}{m} = \frac{v}{R} = \omega$$

Finding the dimensional formula of angular frequency

$$\therefore [\omega] = \left[\frac{qB}{m} \right] = \left[\frac{v}{R} \right] = [T]^{-1}$$



Q. 13 Show that a force that does no work must be a velocity dependent force.

Ans. Let no work is done by a force, so we have

$$dW = \mathbf{F} \cdot d\mathbf{l} = 0$$

$$\Rightarrow \mathbf{F} \cdot \mathbf{v} \, dt = 0 \quad (\text{Since, } d\mathbf{l} = \mathbf{v} \, dt \text{ and } dt \neq 0)$$

$$\Rightarrow \mathbf{F} \cdot \mathbf{v} = 0$$

Thus, F must be velocity dependent which implies that angle between F and v is 90° . If v changes (direction), then (directions) F should also change so that above condition is satisfied,

Q. 14 The magnetic force depends on v which depends on the inertial frame of reference. Does then the magnetic force differ from inertial frame to frame? Is it reasonable that the net acceleration has a different value in different frames of reference?

Ans. Yes, the magnetic force differ from inertial frame to frame. The magnetic force is frame dependent.

The net acceleration which comes into existing out of this is however, frame independent (non-relativistic physics) for inertial frames.

Q. 15 Describe the motion of a charged particle in a cyclotron if the frequency of the radio frequency (rf) field were doubled.

✎ Thinking Process

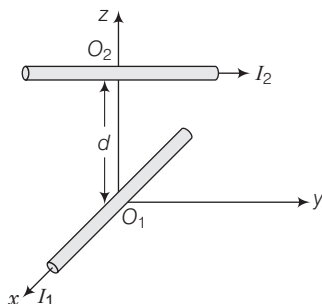
The relationship of radio frequency and charge particle frequency must be equal in order to accelerate the charge particle between the dees in cyclotron.

Ans. Here, the condition of magnetic resonance is violated.

When the frequency of the radio frequency (rf) field were doubled, the time period of the radio frequency (rf) field were halved. Therefore, the duration in which particle completes half revolution inside the dees, radio frequency completes the cycle.

Hence, particle will accelerate and decelerate alternatively. So, the radius of path in the dees will remain same.

Q. 16 Two long wires carrying current I_1 and I_2 are arranged as shown in figure. The one carrying current I_1 is along the x -axis. The other carrying current I_2 is along a line parallel to the y -axis given by $x = 0$ and $z = d$. Find the force exerted at O_2 because of the wire along the x -axis.



K Thinking Process

Here, the understanding of application of the rule of finding directions of magnetic field and magnetic force on current carrying wire placed in magnetic field is beautifully tested.

Ans. In Biot- Savart law, magnetic field **B** is parallel to $id\mathbf{l} \times \mathbf{r}$ and $id\mathbf{l}$ have its direction along the direction of flow of current.

Here, for the direction of magnetic field, At O_2 , due to wire carrying I_1 current is

$$\mathbf{B} \parallel id\mathbf{l} \times \mathbf{r} \text{ or } \hat{\mathbf{i}} \times \hat{\mathbf{k}}, \text{ but } \hat{\mathbf{i}} \times \hat{\mathbf{k}} = -\hat{\mathbf{j}}$$

So, the direction at O_2 is along Y- direction.

The direction of magnetic force exerted at O_2 because of the wire along the, x-axis.

$$\mathbf{F} = I\mathbf{l} \times \mathbf{B} \approx \hat{\mathbf{j}} \times (-\hat{\mathbf{j}}) = 0$$

So, the magnetic field due to I_1 is along the y-axis. The second wire is along the y-axis and hence, the force is zero.

Short Answer Type Questions

Q. 17A current carrying loop consists of 3 identical quarter circles of radius R , lying in the positive quadrants of the x - y , y - z and z - x planes with their centres at the origin, joined together. Find the direction and magnitude of **B** at the origin.

K Thinking Process

The magnetic field due to arc of current carrying coil which subtends an angle θ at centre

is given by $\mathbf{B} = \frac{\mu_0}{4\pi} \frac{I\theta}{R} \hat{\mathbf{n}}$.

Ans. For the current carrying loop quarter circles of radius R , lying in the positive quadrants of the x - y plane

$$\mathbf{B}_1 = \frac{\mu_0}{4\pi} \frac{I(\pi/2)}{R} \hat{\mathbf{k}} = \frac{\mu_0}{4} \frac{I}{2R} \hat{\mathbf{k}}$$

For the current carrying loop quarter circles of radius R , lying in the positive quadrants of the y - z plane

$$\mathbf{B}_2 = \frac{\mu_0}{4} \frac{I}{2R} \hat{\mathbf{i}}$$

For the current carrying loop quarter circles of radius R , lying in the positive quadrants of the z - x plane

$$\mathbf{B}_3 = \frac{\mu_0}{4} \frac{I}{2R} \hat{\mathbf{j}}$$

Current carrying loop consists of 3 identical quarter circles of radius R , lying in the positive quadrants of the x - y , y - z and z - x planes with their centres at the origin, joined together is equal to the vector sum of magnetic field due to each quarter and given by

$$\mathbf{B} = \frac{1}{4\pi} (\hat{\mathbf{i}} + \hat{\mathbf{j}} + \hat{\mathbf{k}}) \frac{\mu_0 I}{2R}.$$



Q. 18 A charged particle of charge e and mass m is moving in an electric field \mathbf{E} and magnetic field \mathbf{B} . Construct dimensionless quantities and quantities of dimension $[T]^{-1}$.

Ans. No dimensionless quantity can be constructed using given quantities.

For a charge particle moving perpendicular to the magnetic field, the magnetic Lorentz forces provides necessary centripetal force for revolution.

$$\frac{mv^2}{R} = qvB$$

On simplifying the terms, we have

$$\therefore \frac{qB}{m} = \frac{v}{R} = \omega$$

Finding the dimensional formula of angular frequency

$$\therefore [\omega] = \left[\frac{qB}{m} \right] = \left[\frac{v}{R} \right] = [T]^{-1}$$

This is the required expression.

Q. 19 An electron enters with a velocity $\mathbf{v} = v_0 \hat{\mathbf{i}}$ into a cubical region (faces parallel to coordinate planes) in which there are uniform electric and magnetic fields. The orbit of the electron is found to spiral down inside the cube in plane parallel to the x - y plane. Suggest a configuration of fields \mathbf{E} and \mathbf{B} that can lead to it.

κ Thinking Process

The magnetic field revolves the charge particle in uniform circular motion in x - y plane and electric field along x -direction increases the speed, which in turn increases the radius of circular path and hence, particle traversed on spiral path.

Ans. Considering magnetic field $\mathbf{B} = B_0 \hat{\mathbf{k}}$, and an electron enters with a velocity $\mathbf{v} = v_0 \hat{\mathbf{i}}$ into a cubical region (faces parallel to coordinate planes).

The force on electron, using magnetic Lorentz force, is given by

$$\mathbf{F} = -e (\mathbf{v}_0 \hat{\mathbf{i}} \times B_0 \hat{\mathbf{k}}) = e v_0 B_0 \hat{\mathbf{i}}$$

which revolves the electron in x - y plane.

The electric force $\mathbf{F} = -e \mathbf{E}_0 \hat{\mathbf{k}}$ accelerates e along z -axis which in turn increases the radius of circular path and hence particle traversed on spiral path.

Q. 20 Do magnetic forces obey Newton's third law. Verify for two current elements $d\mathbf{l}_1 = d\mathbf{l} \hat{\mathbf{i}}$ located at the origin and $d\mathbf{l}_2 = d\mathbf{l} \hat{\mathbf{j}}$ located at $(0, R, 0)$. Both carry current I .

κ Thinking Process

Here, the understanding of application of the rules of finding directions of magnetic field and magnetic force on current carrying wire placed in magnetic field is needed.

Ans. In Biot-Savart's law, magnetic field \mathbf{B} is parallel (||) to $d\mathbf{l} \times \mathbf{r}$ and idl have its direction along the direction of flow of current.

Here, for the direction of magnetic field, At $d\mathbf{l}_2$, located at $(0, R, 0)$ due to wire $d\mathbf{l}_1$ is given by $B \parallel d\mathbf{l} \times \mathbf{r}$ or $\hat{\mathbf{i}} \times \hat{\mathbf{j}}$ (because point $(0, R, 0)$ lies on y -axis), but $\hat{\mathbf{i}} \times \hat{\mathbf{j}} = \hat{\mathbf{k}}$



So, the direction of magnetic field at d_2 is along z-direction.

The direction of magnetic force exerted at d_2 because of the first wire along the x-axis.

$F = i (I \times B)$ i.e., $F \parallel (i \times k)$ or along $-\hat{j}$ direction.

Therefore, force due to dl_1 on dl_2 is non-zero.

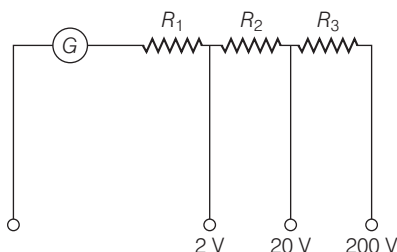
Now, for the direction of magnetic field, At d_1 , located at $(0, 0, 0)$ due to wire d_2 is given by $B \parallel i dl \times r$ or $\hat{j} \times -\hat{j}$ (because origin lies on y-direction w.r.t. point $(0, R, 0)$), but $\hat{j} \times -\hat{j} = 0$.

So, the magnetic field at d_1 does not exist.

Force due to dl_2 on dl_1 is zero.

So, magnetic forces do not obey Newton's third law.

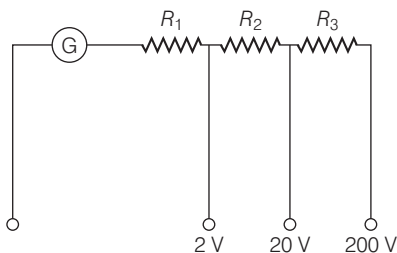
- Q. 21A** multirange voltmeter can be constructed by using a galvanometer circuit as shown in figure. We want to construct a voltmeter that can measure 2V, 20V and 200V using a galvanometer of resistance 10Ω and that produces maximum deflection for current of 1 mA. Find R_1 , R_2 and R_3 that have to be used.



K Thinking Process

A galvanometer can be converted into voltmeter by connecting a very high resistance wire connected in series with galvanometer. The relationship is given by $I_g (G + R) = V$ where I_g is range of galvanometer, G is resistance of galvanometer and R is resistance of wire connected in series with galvanometer.

Ans.



Applying expression in different situations

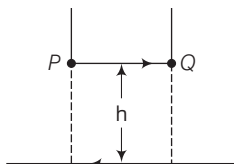
For $i_G (G + R_1) = 2$ for 2V range

For $i_G (G + R_1 + R_2) = 20$ for 20V range

and For $i_G (G + R_1 + R_2 + R_3) = 200$ for 200V range

On solving, we get $R_1 = 1990\Omega$, $R_2 = 18k\Omega$ and $R_3 = 180k\Omega$.

- Q. 22** A long straight wire carrying current of 25A rests on a table as shown in figure. Another wire PQ of length 1m, mass 2.5 g carries the same current but in the opposite direction. The wire PQ is free to slide up and down. To what height will PQ rise?



Thinking Process

The force applied on PQ by long straight wire carrying current of 25A rests on a table must balance the weight of small current carrying wire.

- Ans.** The magnetic field produced by long straight wire carrying current of 25A rests on a table on small wire

$$B = \frac{\mu_0 I}{2\pi h}$$

The magnetic force on small conductor is

$$F = BIl \sin\theta = BIl$$

Force applied on PQ balance the weight of small current carrying wire.

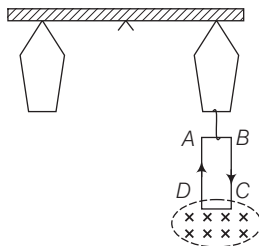
$$F = mg = \frac{\mu_0 I^2 l}{2\pi h}$$

$$h = \frac{\mu_0 I^2 l}{2\pi mg} = \frac{4\pi \times 10^{-7} \times 25 \times 25 \times 1}{2\pi \times 2.5 \times 10^{-3} \times 9.8} = 51 \times 10^{-4}$$

$$h = 0.51\text{cm}$$

Long Answer Type Questions

- Q. 23** A 100 turn rectangular coil $ABCD$ (in X - Y plane) is hung from one arm of a balance figure. A mass 500g is added to the other arm to balance the weight of the coil. A current 4.9 A passes through the coil and a constant magnetic field of 0.2 T acting inward (in x - z plane) is switched on such that only arm CD of length 1 cm lies in the field. How much additional mass m must be added to regain the balance?



Thinking Process

The magnetic force applied on CD by magnetic field must balance the weight.

Ans. For equilibrium/ balance, net torque should also be equal to zero.

When the field is off $\sum \tau = 0$ considering the separation of each hung from mid-point be l .

$$Mgl = W_{\text{coil}} l$$

$$500 g l = W_{\text{coil}} l$$

$$W_{\text{coil}} = 500 \times 9.8 \text{ N}$$

Taking moment of force about mid-point, we have the weight of coil

When the magnetic field is switched on

$$Mgl + mgl = W_{\text{coil}} l + IBL \sin 90^\circ l$$

$$mgl = BIL l$$

$$m = \frac{BIL}{g} = \frac{0.2 \times 4.9 \times 1 \times 10^{-2}}{9.8} = 10^{-3} \text{ kg} = 1 \text{ g}$$

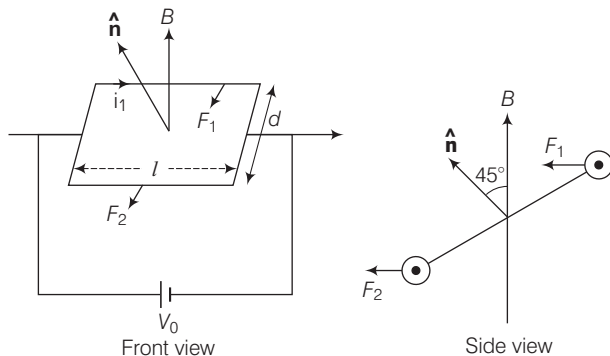
Thus, 1g of additional mass must be added to regain the balance.

Q. 24A rectangular conducting loop consists of two wires on two opposite sides of length l joined together by rods of length d . The wires are each of the same material but with cross-sections differing by a factor of 2. The thicker wire has a resistance R and the rods are of low resistance, which in turn are connected to a constant voltage source V_0 . The loop is placed in uniform a magnetic field \mathbf{B} at 45° to its plane. Find τ , the torque exerted by the magnetic field on the loop about an axis through the centres of rods.

K Thinking Process

After finding current in both wires, magnetic forces and torques need to be calculated for finding the net torque.

Ans.



The thicker wire has a resistance R , then the other wire has a resistance $2R$ as the wires are of the same material but with cross-sections differing by a factor 2.

Now, the force and hence, torque on first wire is given by

$$F_1 = i_1 l B = \frac{V_0}{2R} l B, \tau_1 = \frac{d}{2\sqrt{2}} F_1 = \frac{V_0 l d B}{2\sqrt{2} R}$$

Similarly, the force hence torque on other wire is given by

$$F_2 = i_2 l B = \frac{V_0}{4R} l B, \tau_2 = \frac{d}{4\sqrt{2}} F_2 = \frac{V_0 l d B}{4\sqrt{2} R}$$

So, net torque,

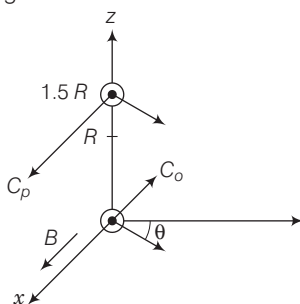
$$\tau = \tau_1 - \tau_2 = \frac{1}{4\sqrt{2}} \frac{V_0 l d B}{R}$$

Q.25 An electron and a positron are released from $(0, 0, 0)$ and $(0, 0, 1.5R)$ respectively, in a uniform magnetic field $\mathbf{B} = B_0 \hat{\mathbf{i}}$, each with an equal momentum of magnitude $p = eBR$. Under what conditions on the direction of momentum will the orbits be non-intersecting circles?

κ Thinking Process

The circles of the electron and a positron shall not overlap if the distance between the two centers are greater than $2R$.

Ans. Since, B is along the x -axis, for a circular orbit the momenta of the two particles are in the y - z plane. Let p_1 and p_2 be the momentum of the electron and positron, respectively. Both traverse a circle of radius R of opposite sense. Let p_1 make an angle θ with the y -axis p_2 must make the same angle.



The centres of the respective circles must be perpendicular to the momenta and at a distance R . Let the centre of the electron be at C_e and of the positron at C_p . The coordinates of C_e is

$$C_e \equiv (0, -R \sin \theta, R \cos \theta)$$

The coordinates of C_p is

$$C_p \equiv (0, -R \sin \theta, \frac{3}{2}R - R \cos \theta)$$

The circles of the two shall not overlap if the distance between the two centers are greater than $2R$.

Let d be the distance between C_p and C_e .

Let d be the distance between C_p and C_e .

$$\begin{aligned} \text{Then, } d^2 &= (2R \sin \theta)^2 + \left(\frac{3}{2}R - 2R \cos \theta \right)^2 \\ &= 4R^2 \sin^2 \theta + \frac{9}{4}R^2 - 6R^2 \cos \theta + 4R^2 \cos^2 \theta \\ &= 4R^2 + \frac{9}{4}R^2 - 6R^2 \cos \theta \end{aligned}$$

Since, d has to be greater than $2R$

$$\begin{aligned} d^2 &> 4R^2 \\ \Rightarrow 4R^2 + \frac{9}{4}R^2 - 6R^2 \cos \theta &> 4R^2 \\ \Rightarrow \frac{9}{4} &> 6 \cos \theta \\ \text{or, } \cos \theta &< \frac{3}{8} \end{aligned}$$

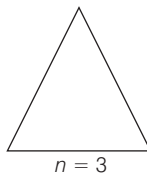
Q. 26A uniform conducting wire of length $12a$ and resistance R is wound up as a current carrying coil in the shape of (i) an equilateral triangle of side a , (ii) a square of sides a and, (iii) a regular hexagon of sides a . The coil is connected to a voltage source V_0 . Find the magnetic moment of the coils in each case.

K Thinking Process

The different shapes forms figures of different area and hence, there magnetic moments varies.

Ans. We know that magnetic moment of the coils $m = nIA$.
Since, the same wire is used in three cases with same potentials, therefore, same current flows in three cases.

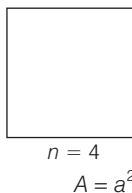
- (i) for an equilateral triangle of side a ,
 $n = 4$ as the total wire of length $= 12a$



$$\text{Magnetic moment of the coils } m = nIA = 4I \left(\frac{\sqrt{3}}{4} a^2 \right)$$

$$\therefore m = I a^2 \sqrt{3}$$

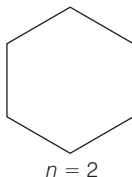
- (ii) For a square of sides a ,



$$n = 3 \text{ as the total wire of length } = 12a$$

$$\text{Magnetic moment of the coils } m = nIA = 3 I (a^2) = 3 I a^2$$

- (iii) For a regular hexagon of sides a ,



$$n = 2 \text{ as the total wire of length } = 12a$$

$$\text{Magnetic moment of the coils } m = nIA = 2 I \left(\frac{6\sqrt{3}}{4} a^2 \right)$$

$$m = 3\sqrt{3}a^2 I$$

m is in a geometric series.

Q. 27 Consider a circular current-carrying loop of radius R in the x - y plane with centre at origin. Consider the line integral

$$\mathfrak{I}(L) = \left| \int_{-L}^L \mathbf{B} \cdot d\mathbf{l} \right|$$

taken along z -axis.

- Show that $\mathfrak{I}(L)$ monotonically increases with L
- Use an appropriate amperian loop to show that $\mathfrak{I}(\infty) = \mu_0 I$. where I is the current in the wire
- Verify directly the above result
- Suppose we replace the circular coil by a square coil of sides R carrying the same current I .

What can you say about $\mathfrak{I}(L)$ and $\mathfrak{I}(\infty)$?

κ Thinking Process

This question revolves around the application of Ampere circuital law.

Ans. (a) $B(z)$ points in the same direction on z -axis and hence, $J(L)$ is a monotonically function of L .

Since, B and $d\mathbf{l}$ along the same direction, therefore $\mathbf{B} \cdot d\mathbf{l} = B \cdot dl$ as $\cos 0 = 1$

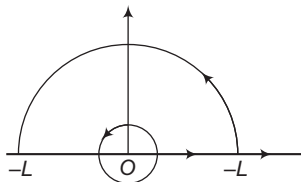
(b) $J(L)$ + contribution from large distance on contour $C = \mu_0 I$

\therefore as $L \rightarrow \infty$

Contribution from large distance $\rightarrow 0$ (as $B \propto 1/r^3$)

$$J(\infty) = \mu_0 I$$

(c) The magnetic field due to circular current-carrying loop of radius R in the x - y plane with centre at origin at any point lying at a distance of from origin.



$$B_z = \frac{\mu_0 I R^2}{2(z^2 + R^2)^{3/2}}$$

$$\int_{-\infty}^{\infty} B_z dz = \int_{-\infty}^{\infty} \frac{\mu_0 I R^2}{2(z^2 + R^2)^{3/2}} dz$$

Put

$$z = R \tan \theta_1$$

\Rightarrow

$$dz = R \sec^2 \theta d\theta$$

\therefore

$$\int_{-\infty}^{\infty} B_z dz = \frac{\mu_0 I}{2} \int_{-\pi/2}^{\pi/2} \cos \theta d\theta = \mu_0 I$$

(d) $B(z)_{\text{square}} < B(z)_{\text{circular coil}}$

\therefore

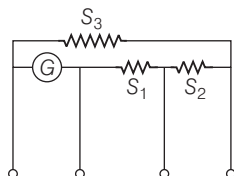
$$\mathfrak{I}(L)_{\text{square}} < \mathfrak{I}(L)_{\text{circular coil}}$$

But by using arguments as in (b)

$$\mathfrak{I}(\infty)_{\text{square}} = \mathfrak{I}(\infty)_{\text{circular}}$$



- Q. 28** A multirange current meter can be constructed by using a galvanometer circuit as shown in figure. We want a current meter that can measure 10mA, 100mA and 1mA using a galvanometer of resistance 10Ω and that produces maximum deflection for current of 1mA. Find S_1 , S_2 and S_3 that have to be used.



K Thinking Process

A galvanometer can be converted into ammeter by connecting a very low resistance wire (shunt S) connected in parallel with galvanometer. The relationship is given by $I_g G = (I - I_g) S$ where I_g is range of galvanometer, G is resistance of galvanometer.

Ans.

$$I_g \cdot G = (I_1 - I_g) (S_1 + S_2 + S_3) \text{ for } I_1 = 10 \text{ mA}$$

$$I_g (G + S_1) = (I_2 - I_g) (S_2 + S_3) \text{ for } I_2 = 100 \text{ mA}$$

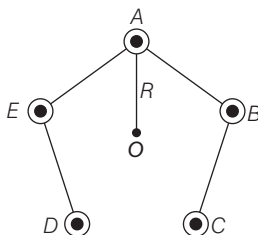
$$\text{and gives } I_g (G + S_1 + S_2) = (I_3 - I_g) (S_3) \text{ for } I_3 = 1 \text{ A}$$

$$\text{and } S_1 = 1 \text{ W}, S_2 = 0.1 \text{ W}$$

$$S_3 = 0.01 \text{ W}$$

- Q. 29** Five long wires A , B , C , D and E , each carrying current I are arranged to form edges of a pentagonal prism as shown in figure. Each carries current out of the plane of paper.

- What will be magnetic induction at a point on the axis O ? Axis is at a distance R from each wire.
- What will be the field if current in one of the wires (say A) is switched off?
- What if current in one of the wire (say A) is reversed?



K Thinking Process

The vector sum of magnetic field produced by each wire at O is equal to 0.

Ans. (a) Suppose the five wires A , B , C , D and E be perpendicular to the plane of paper at locations as shown in figure.

Thus, magnetic field induction due to five wires will be represented by various sides of a closed pentagon in one order, lying in the plane of paper. So, its value is zero.

- (b) Since, the vector sum of magnetic field produced by each wire at O is equal to 0. Therefore, magnetic induction produced by one current carrying wire is equal in magnitude of resultant of four wires and opposite in direction.

Therefore, the field if current in one of the wires (say A) is switched off is $\frac{\mu_0}{2\pi} \frac{i}{R}$ perpendicular to AO towards left.

- (c) If current in wire A is reversed, then total magnetic field induction at O

= Magnetic field induction due to wire A + magnetic field induction due to wires B , C , D and E

$$= \frac{\mu_0}{4\pi R} \frac{2I}{R}$$

(acting perpendicular to AO towards left) + $\frac{\mu_0}{\pi} \frac{2I}{R}$ (acting perpendicular AO towards left)

$$= \frac{\mu_0 I}{\pi R} \text{ acting perpendicular } AO \text{ towards left.}$$